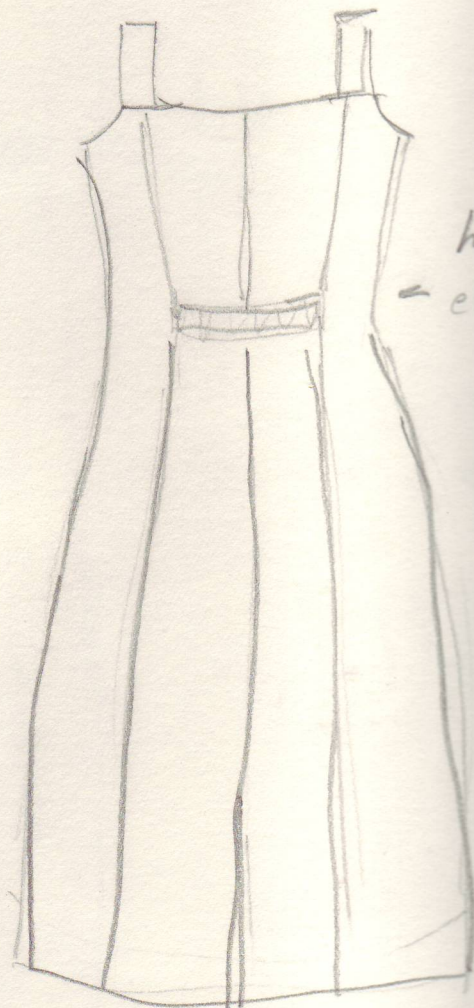


Summer  
challis  
the dress



Tassel belt  
side seam  
pockets

Back

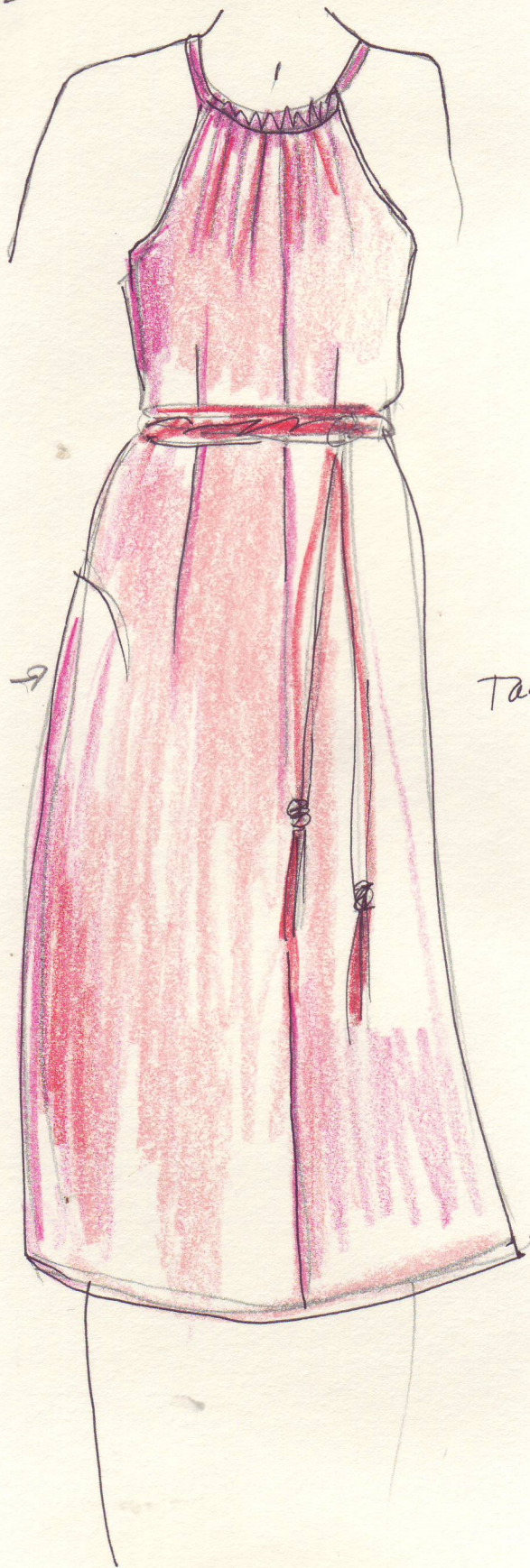


side  
seam  
pockets



summer  
alter  
Dress

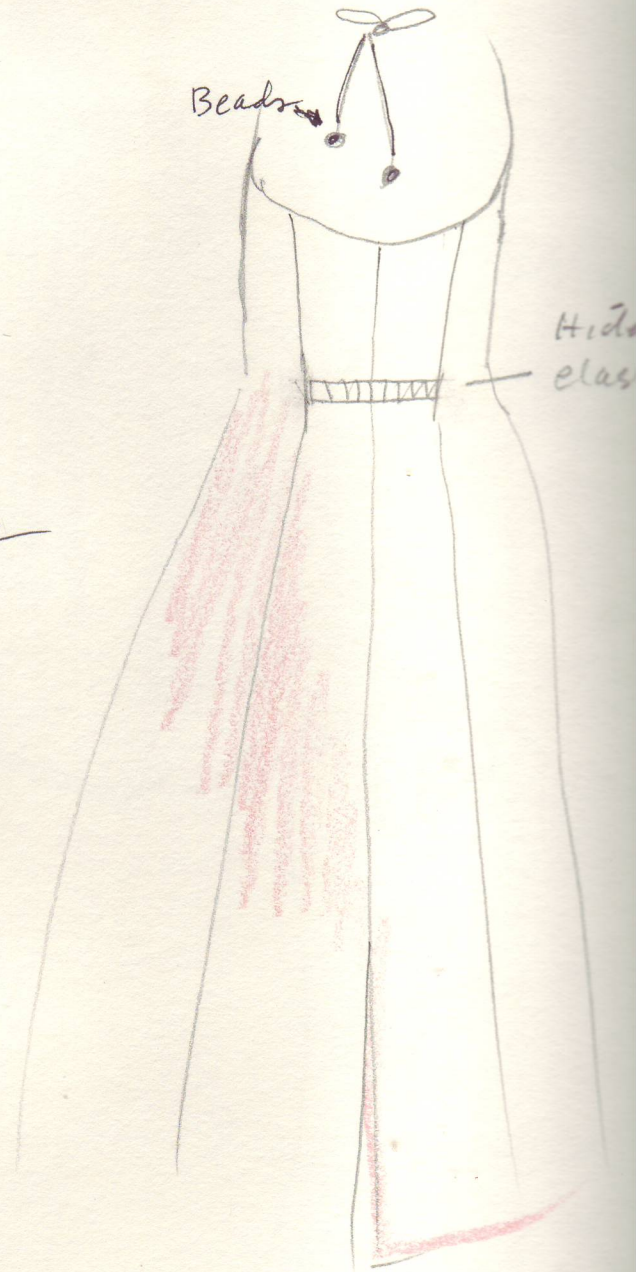
ayon chalin



side  
pockets →

Tassel belt

Back



Beads

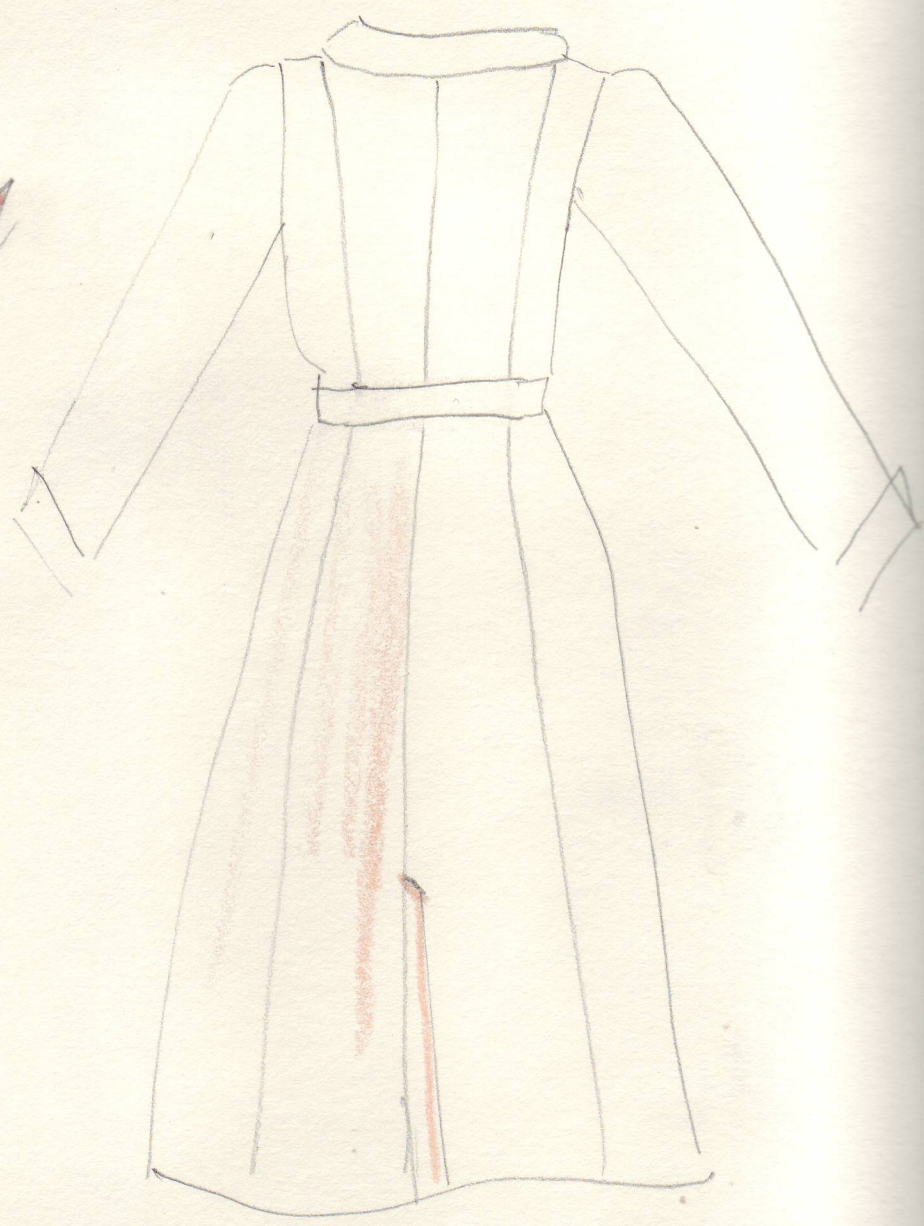
Hidden  
elastic



Coat



Back

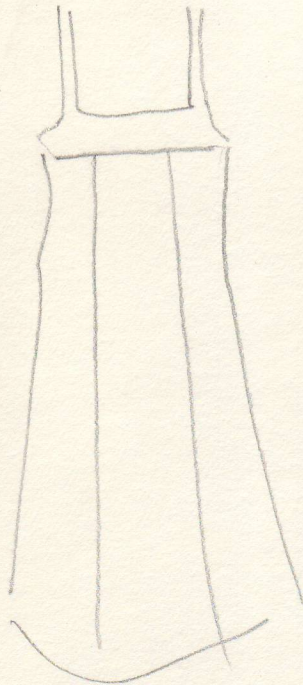




summer  
Tank dresses

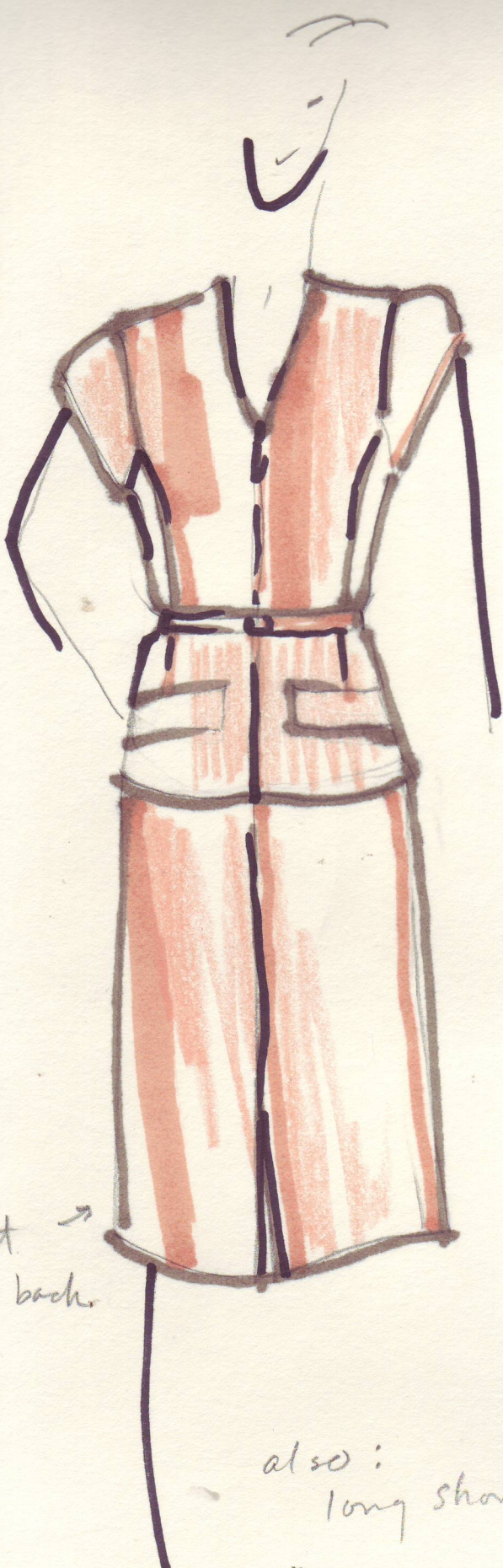


Back



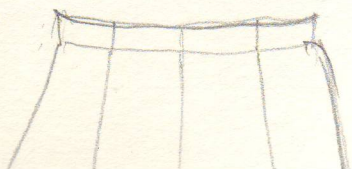


sleeve  
y suit  
jac

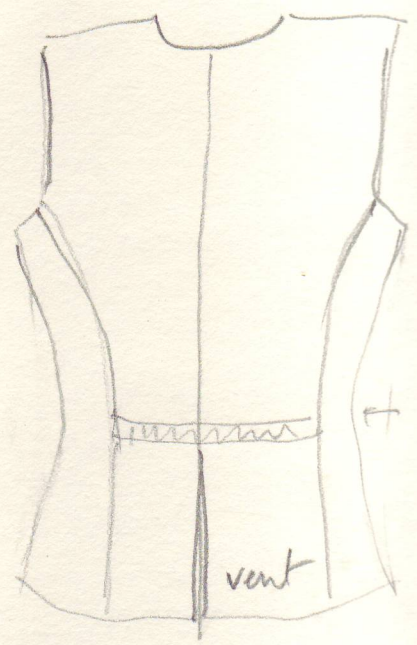


vent →  
front + back.

also:  
long shorts:



Back



hidd.  
elast.



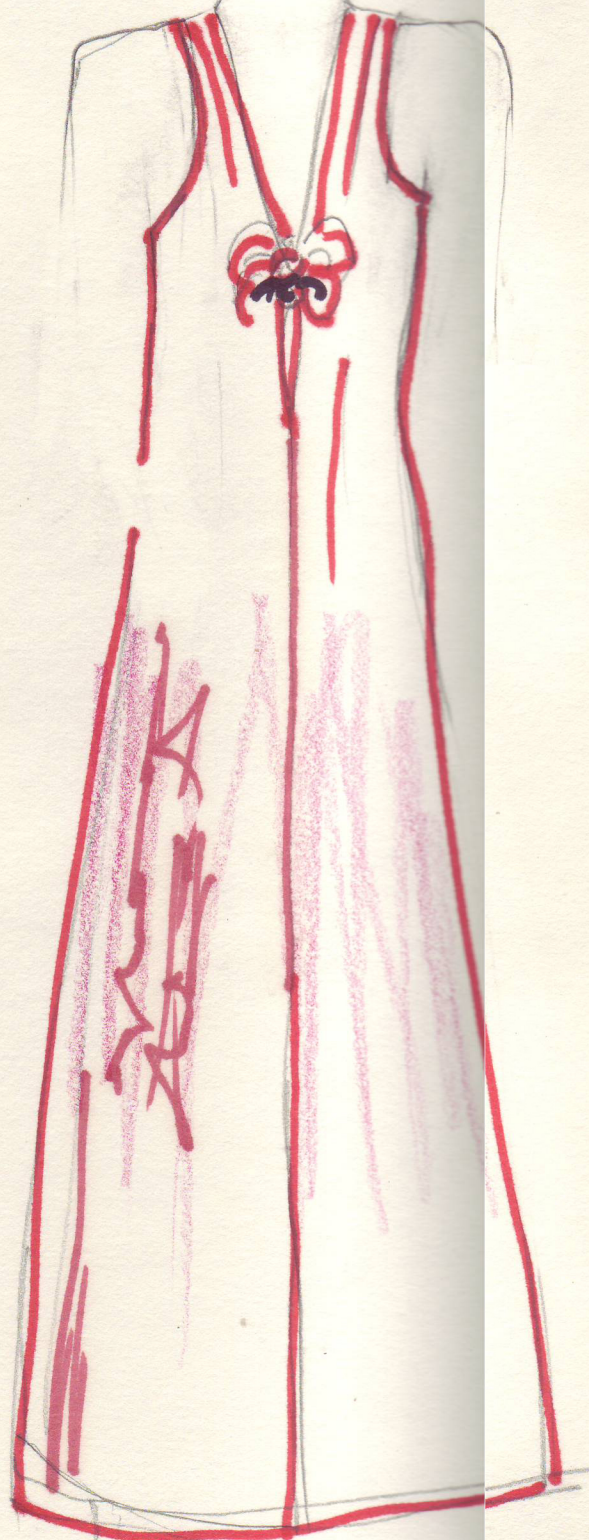


upcycled  
light wool  
jacket  
circa 1977



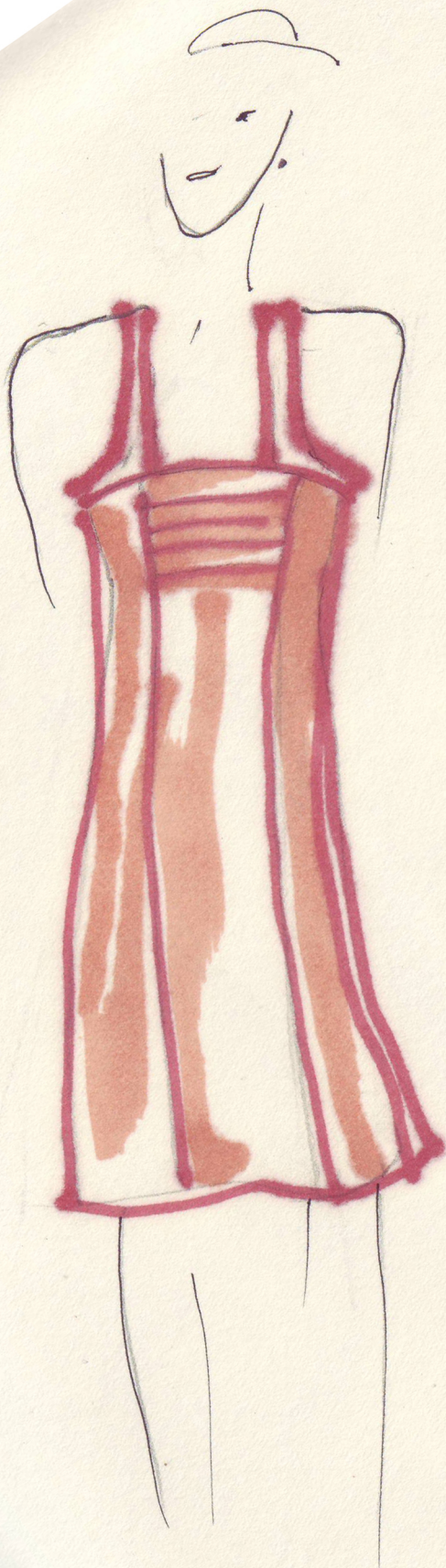
front slit

Sleeveless  
Knot  
Dress -  
front slit





Summer  
Tank  
dress



Back





Summer  
Halter  
dress

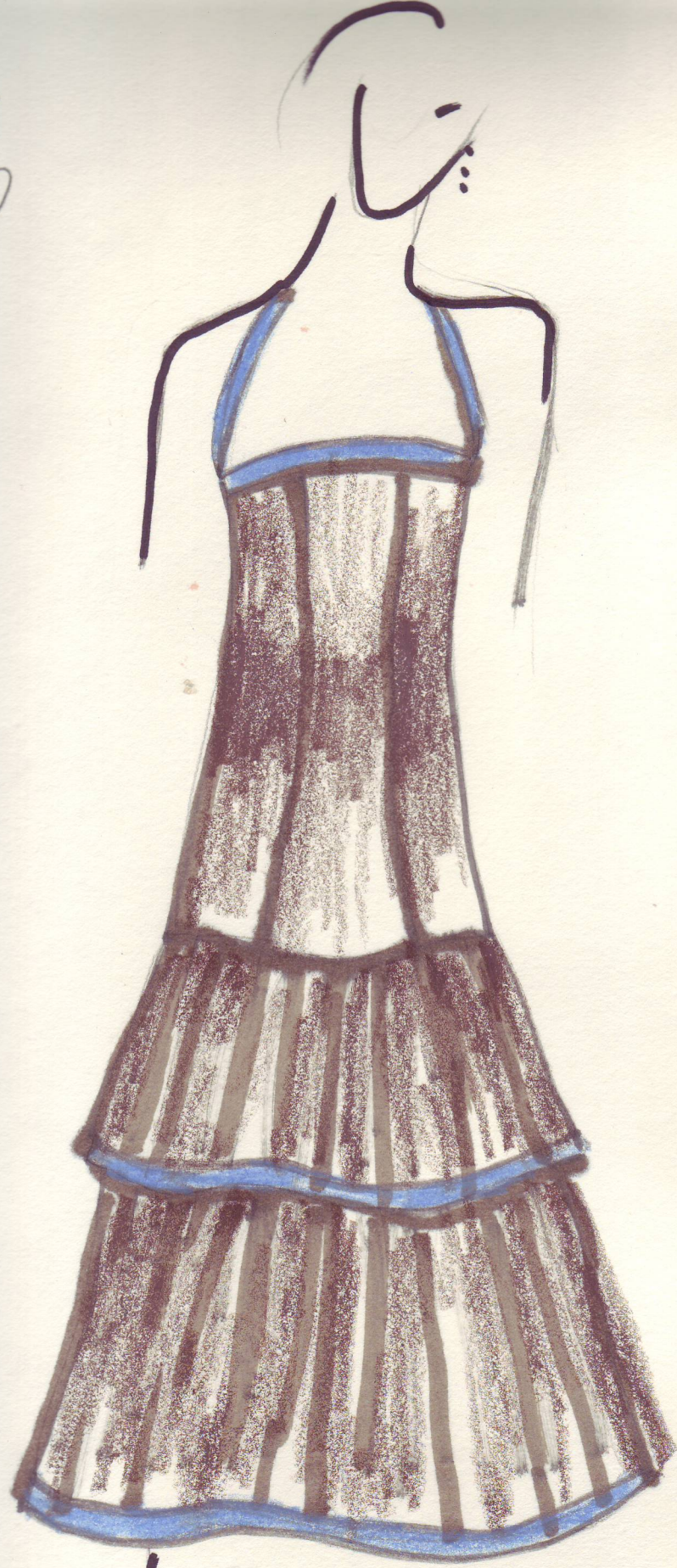


Back

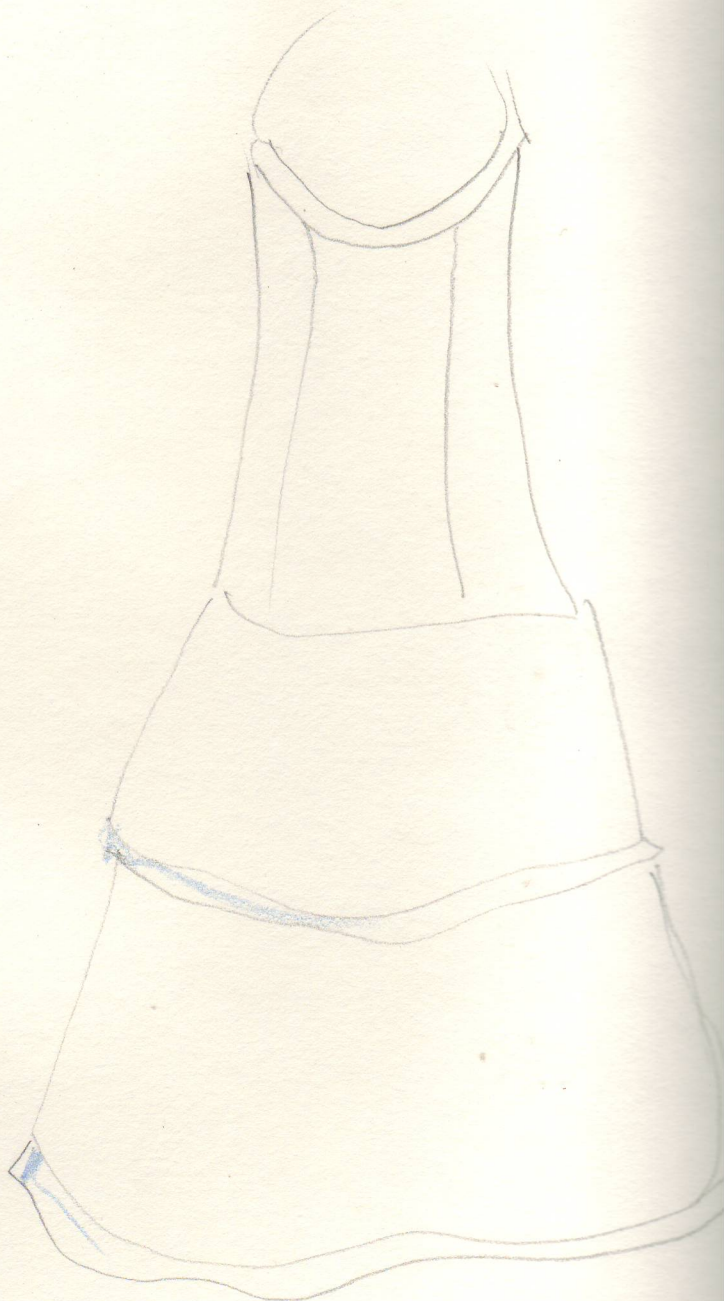




my



Back





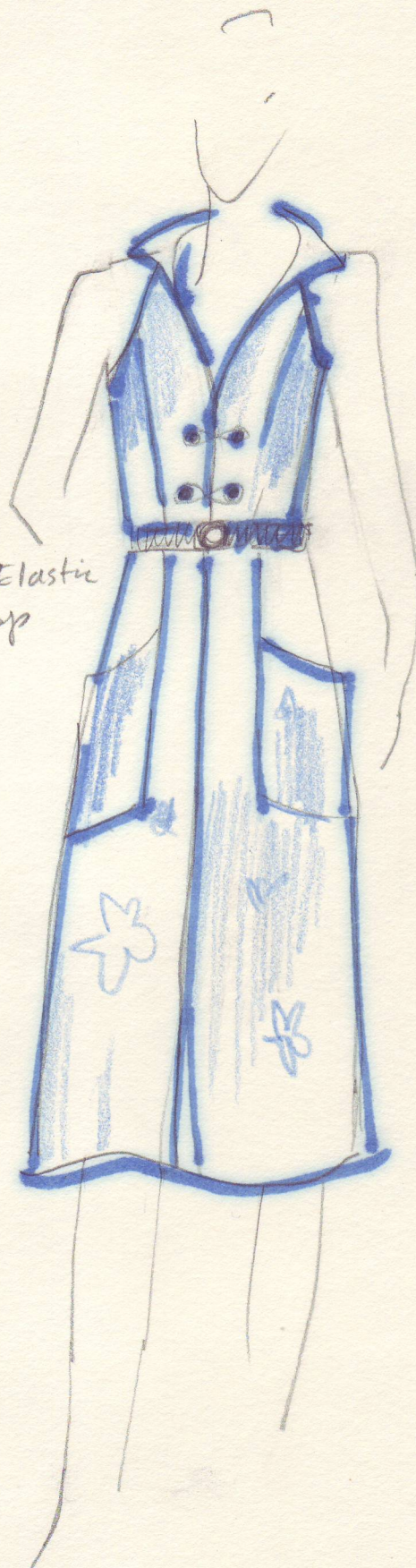
Summer  
Halter  
dress

Back



Blue + white  
Hawaiian  
print

Thick Elastic  
w/clasp





Empire  
sleeveless  
summer dress



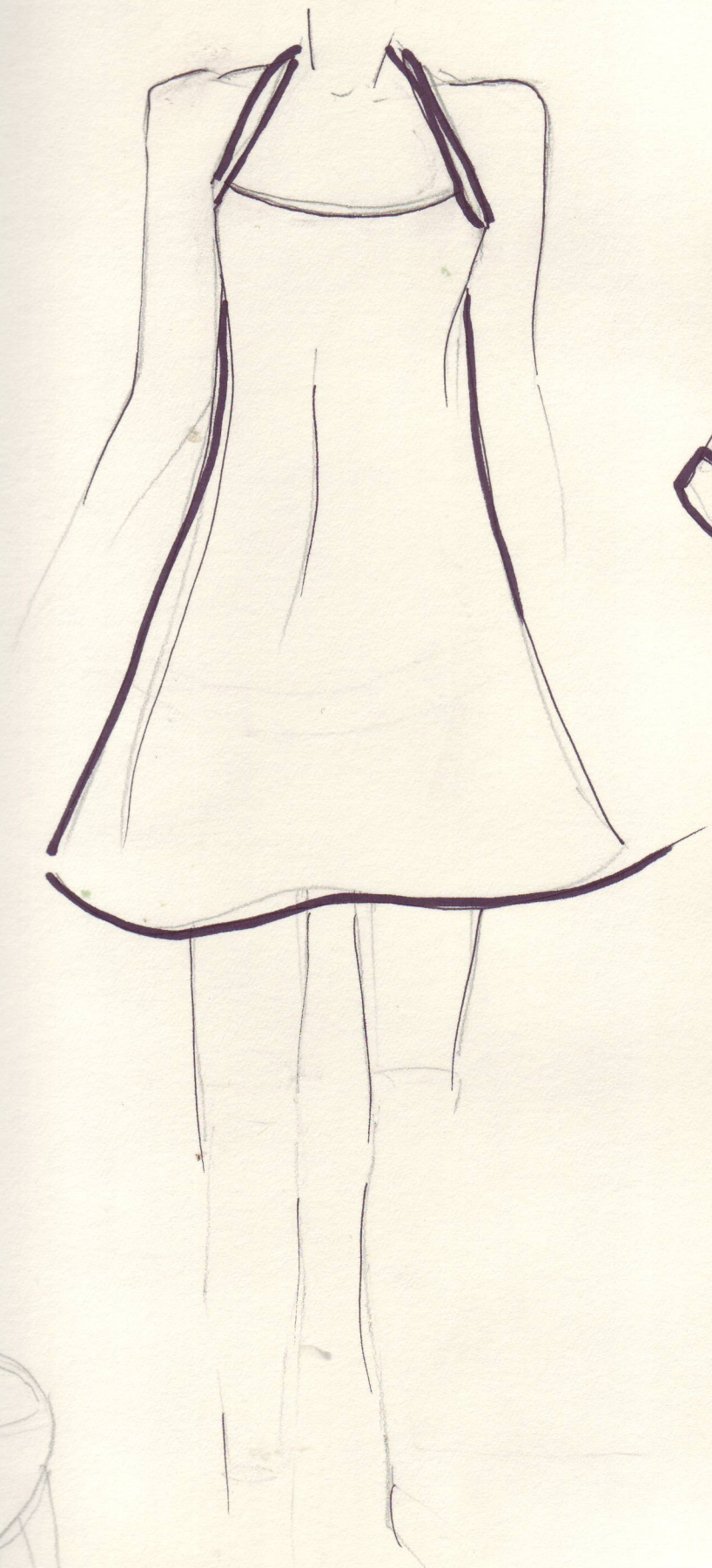
Back



Bamboo + silk

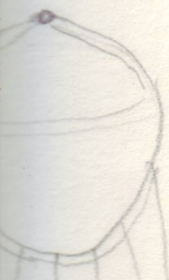


ter  
g dress



upcycled cashmere  
cardigan circa 196

back





undress  
ruffles

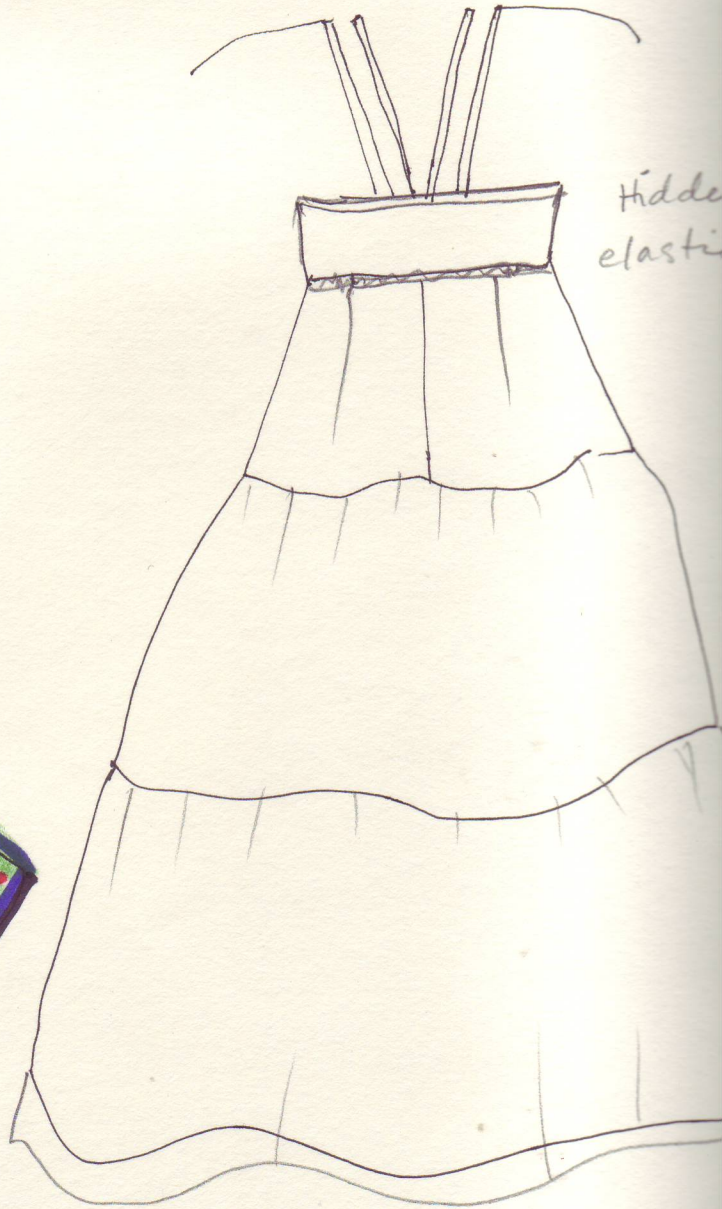
Challis

seam  
chets



Back

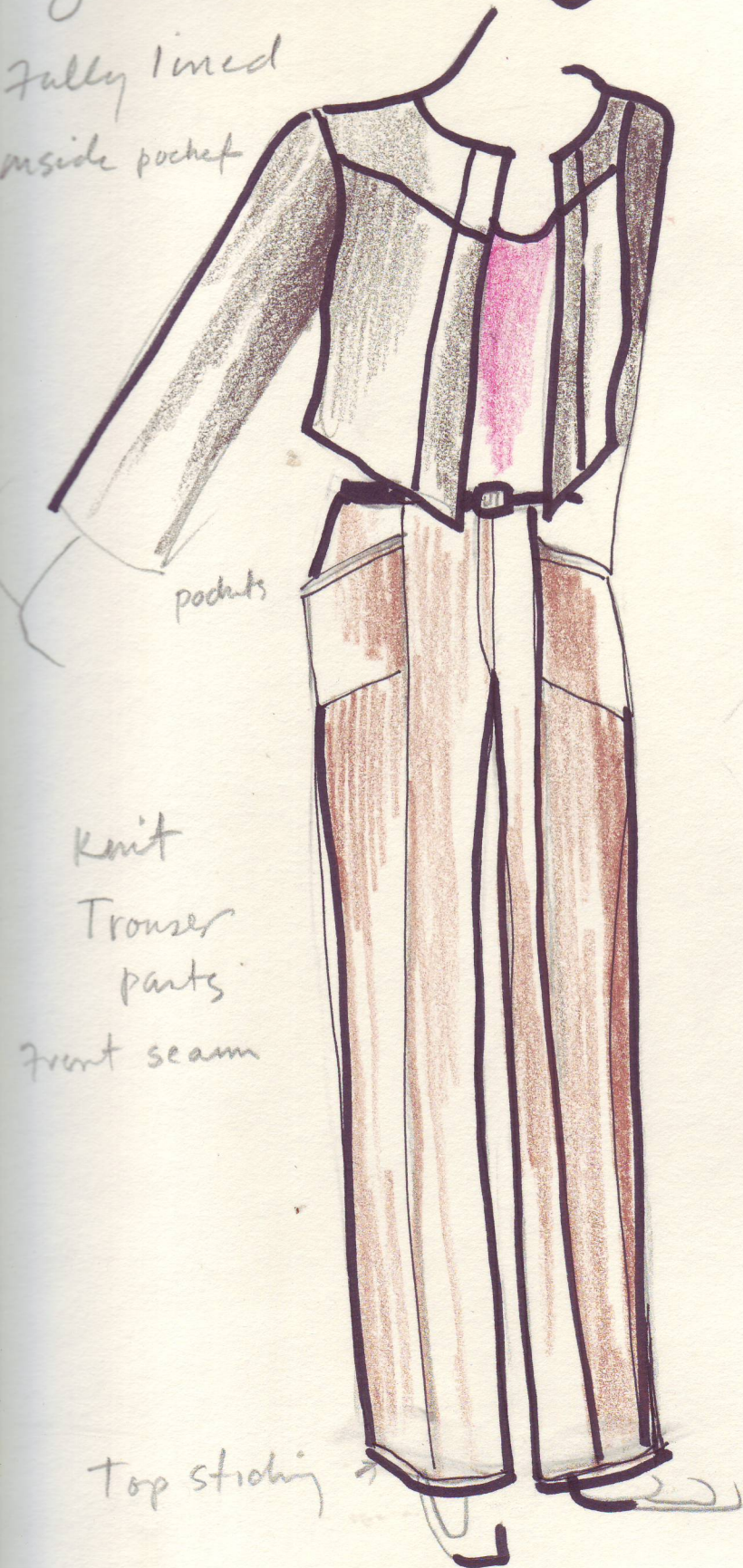
Hidden  
elastic





upcycled wool  
jacket

fully lined  
inside pocket



pockets

knit

Trouser  
pants

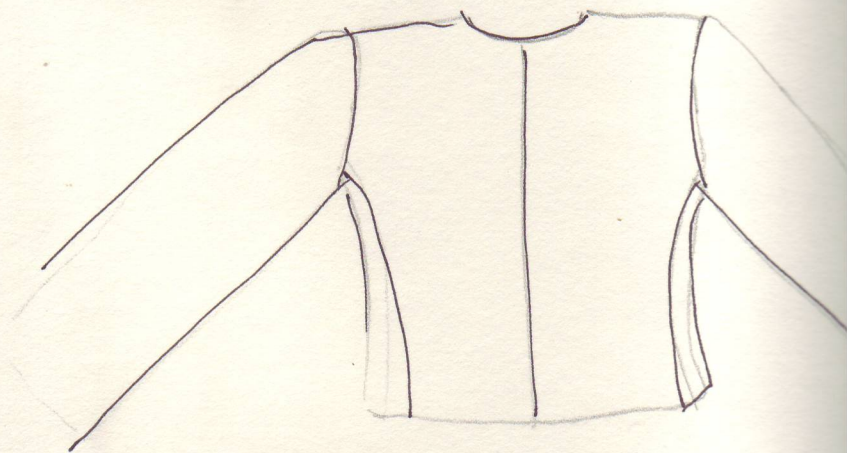
front seam

Top stitching

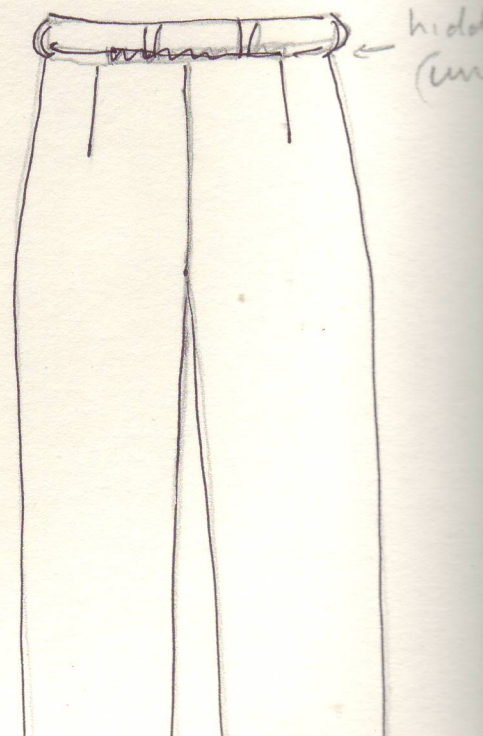
cap sleeve shirt



Jacket  
Back



pants boot ca



hidden  
(in)

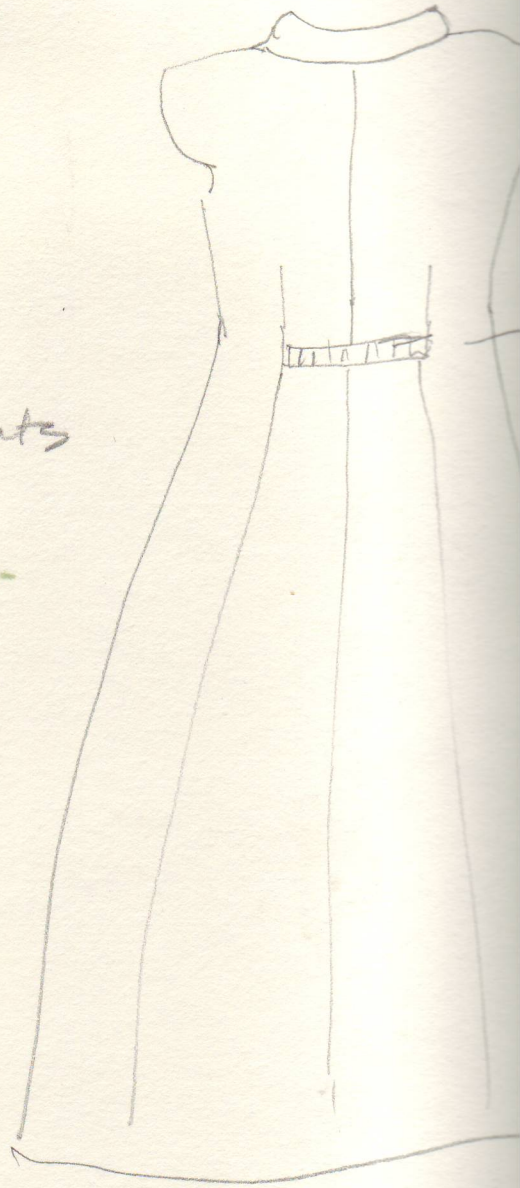


spring  
wrap  
dress



side pockets

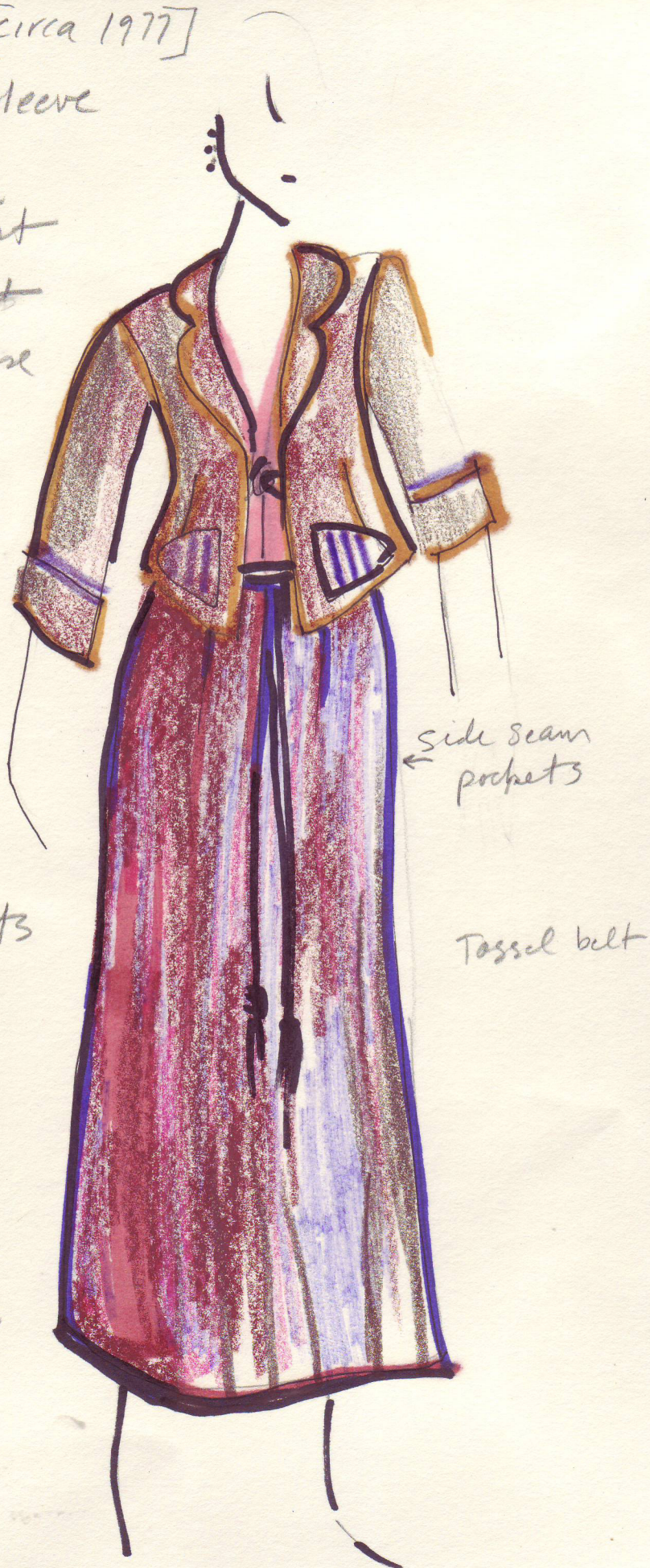
Back



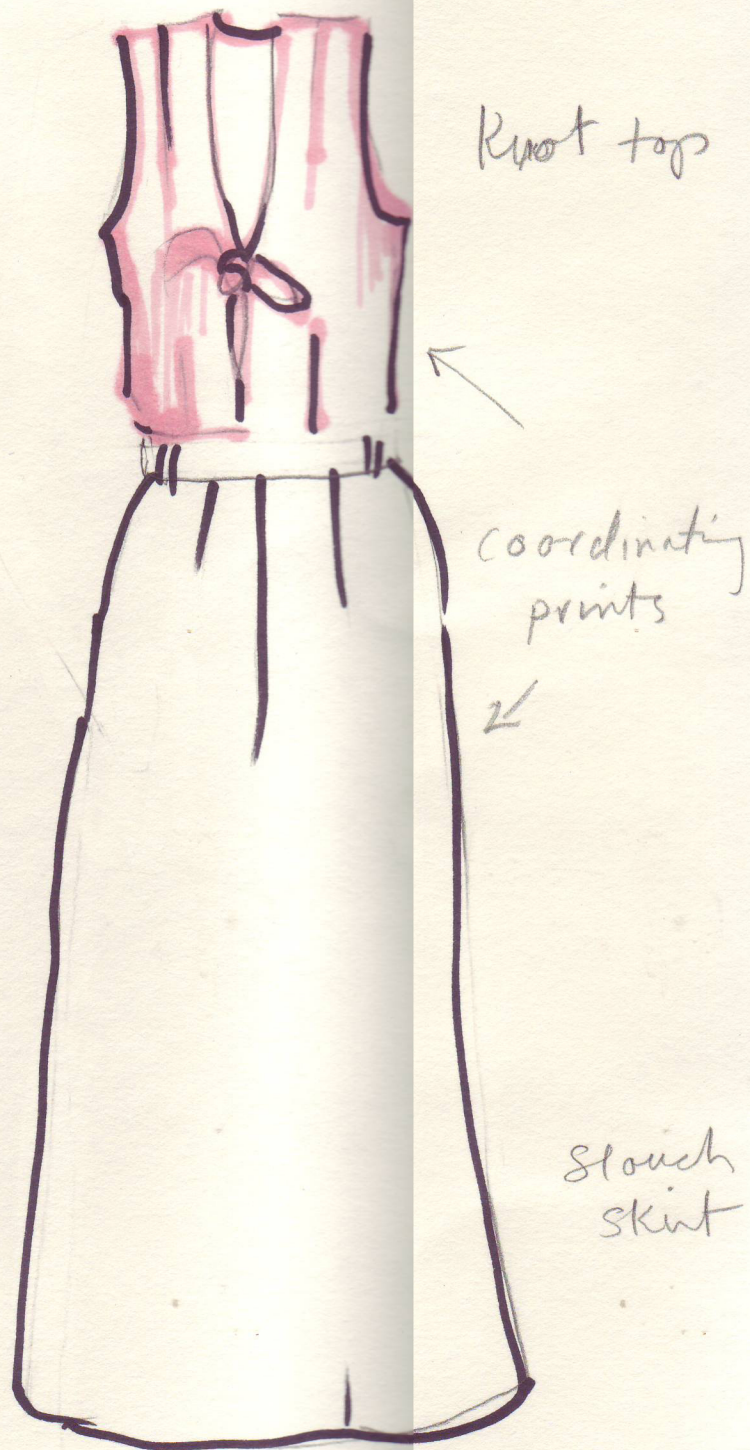


\* upcycled [circa 1977]

- linen 3/4 sleeve jacket
- slouch skirt
- Bodice knot
- sleeveless blouse



- Top + skirt  
mixed prints



Knot top

coordinating  
prints

slouch  
skirt



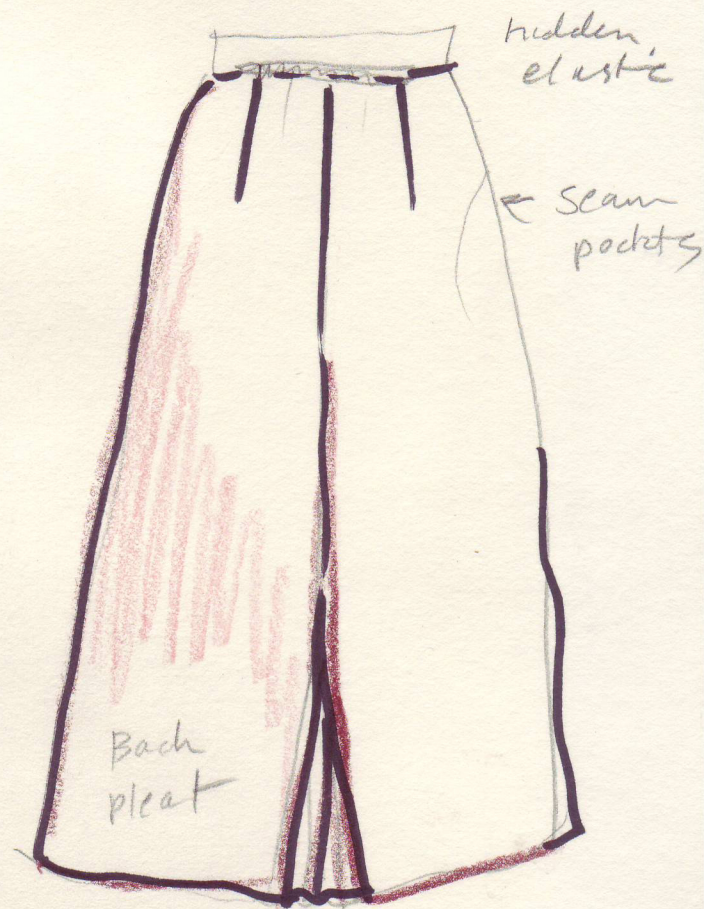
upcycled (circa 1977)  
linen jacket

- w/ patch pockets
- + coordinating trim on cuffs
- Vent Back

Tassel belt



Slouch skirt  
Back



Jacket

